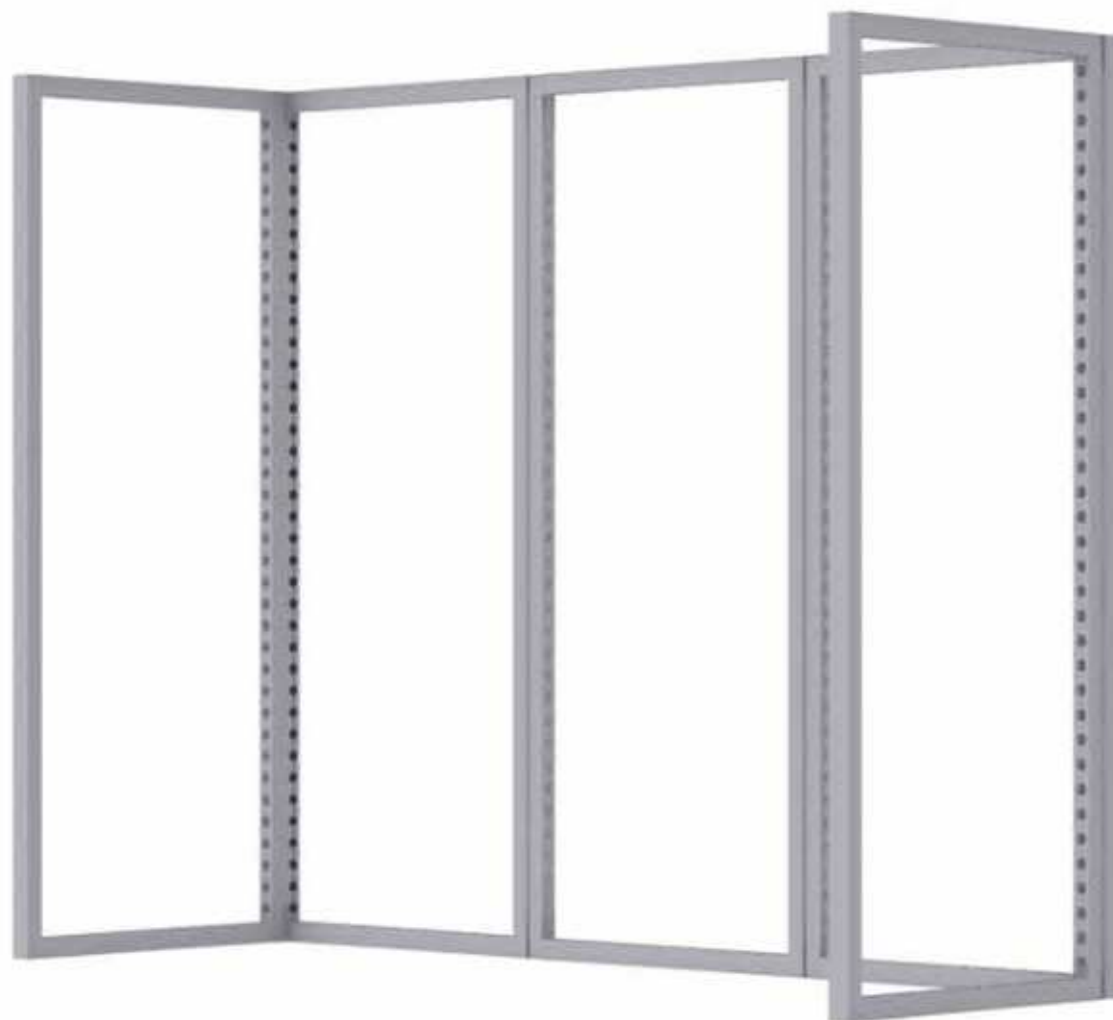
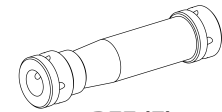
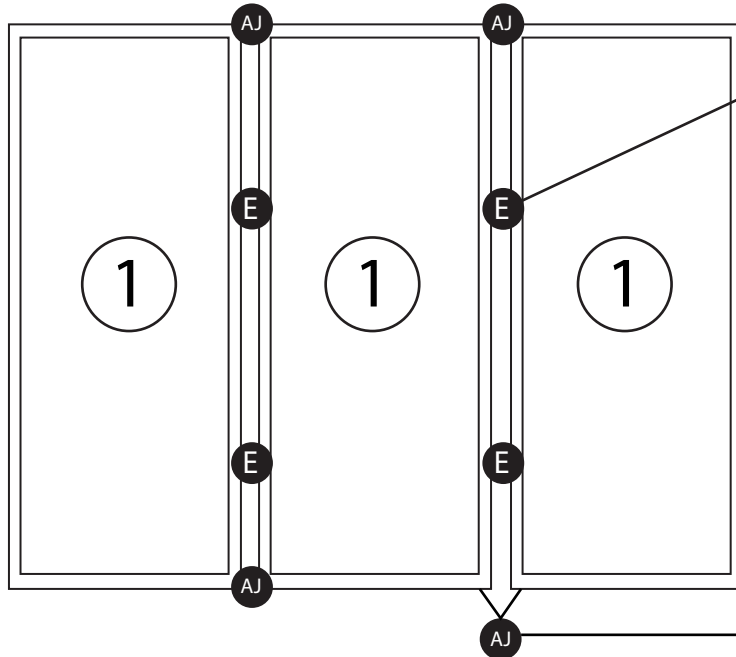


**MODCO 12 - 10X10**

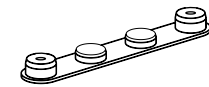
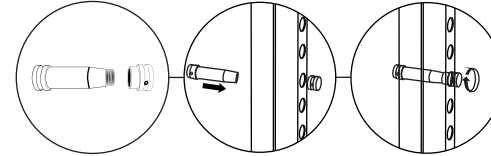


# MODCO 12 - 10X10

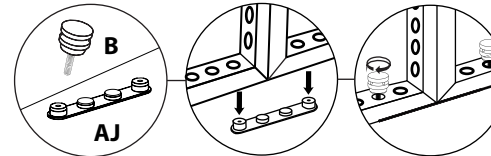
- Use PARTS LIST to reference parts.



**REF (E)**  
MOD-CLA-CON



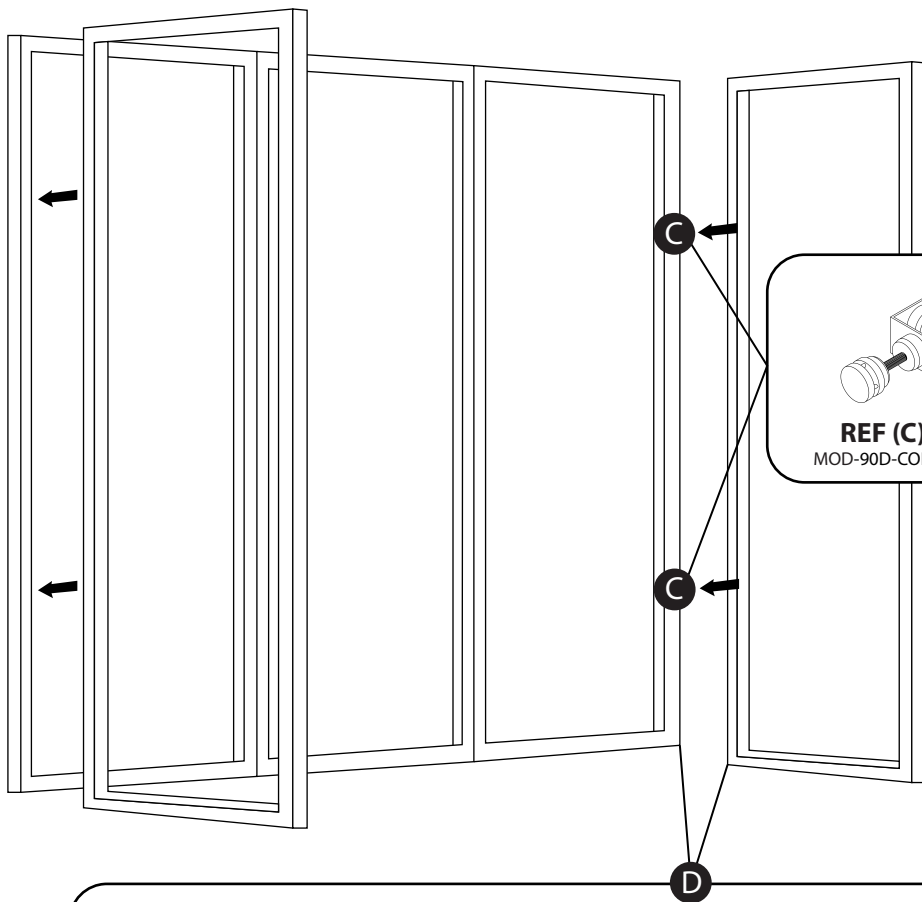
**REF (AJ) / (B)**  
MOD-180D-CON / MOD-PC



PARTS LIST			
REF	QTY	PART NO.	DESCRIPTION
1	5	MOD-FRM-992x2418	Straight Frame, Corner Screw Connect 992mm x 2418mm
B	24	MOD-PC	Pin Connector
C	4	MOD-90D-CON	90° Connector
D	4	MOD-SM90D-CON	90° Connector
E	4	MOD-CLA-CON	Clamp Connector
AJ	4	MOD-180D-CON	180 Degree Connector

# MODCO 12 - 10X10

- Connect each wall to make a 90° corner. Repeat for opposite side.



**REF (C) / (B)**  
MOD-90D-CON + MOD-PC

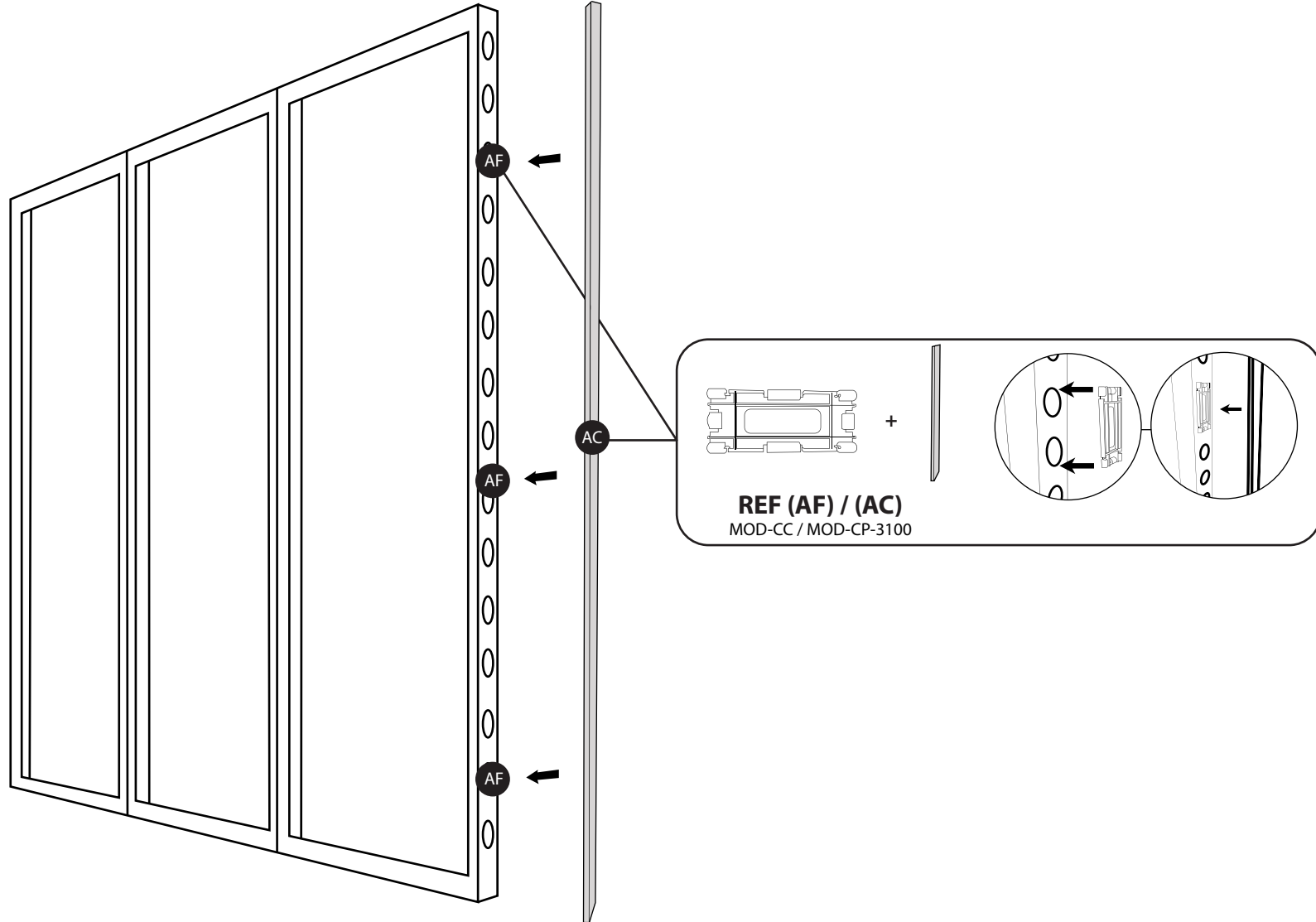
This callout block contains a 3D exploded view of a corner connector (MOD-90D-CON) and a panel (MOD-PC). It includes three circular inset diagrams showing the step-by-step assembly: 1) The connector is inserted into the corner of the panel. 2) A screw is inserted through the connector into the panel. 3) The screw is tightened. A QR code is located to the right of the diagrams.

**REF (D) / (B)**  
MOD-SM90D-CON / MOD-PC

This callout block contains a 3D exploded view of a corner connector (MOD-SM90D-CON) and a panel (MOD-PC). It includes three circular inset diagrams showing the step-by-step assembly: 1) The connector is inserted into the corner of the panel. 2) A screw is inserted through the connector into the panel. 3) The screw is tightened. A QR code is located to the right of the diagrams.

# MODCO 12 - 10X10

- Insert clip connector into holes (exposed side). Attach cover profile to each exposed side (4 sides total). Cover profile locks into clip connectors.



## COVER PROFILES & ACCESSORIES

REF	QTY	PART NO.	DESCRIPTION
AC	4	MOD-CP-992x2418	Cover Profile for Frame 992x2418. Flat Model. Anodized
AF	12	MOD-CC	Clip Connector Cover Connects Cover Profile

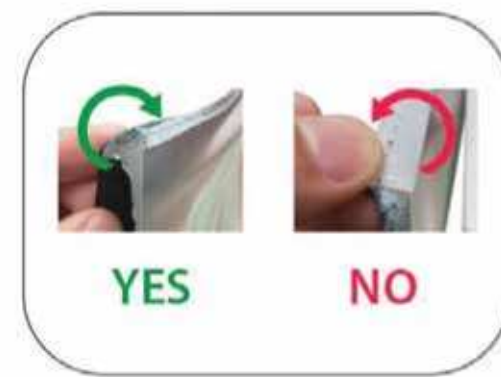
# GRAPHIC INSTALL



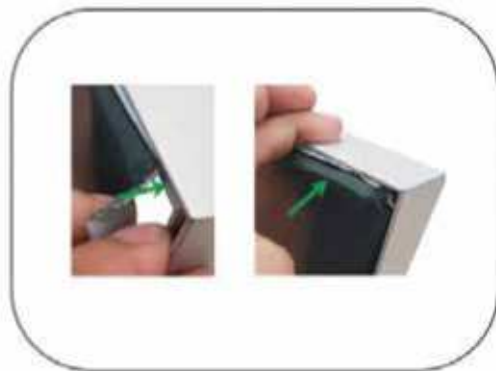
Place graphic over the front of the frame.



Begin inserting SEG beading at each corner.



Insert the silicone beading with the fabric folded over. The silicone beading should not be exposed.



Using your fingers, push both fabric and silicone beading completely into the extrusion channel.



Continue to push in the remaining silicone beading on each side.



Check the perimeter of the frame for any excess beading that hasn't been pushed in. Graphic should be taut.