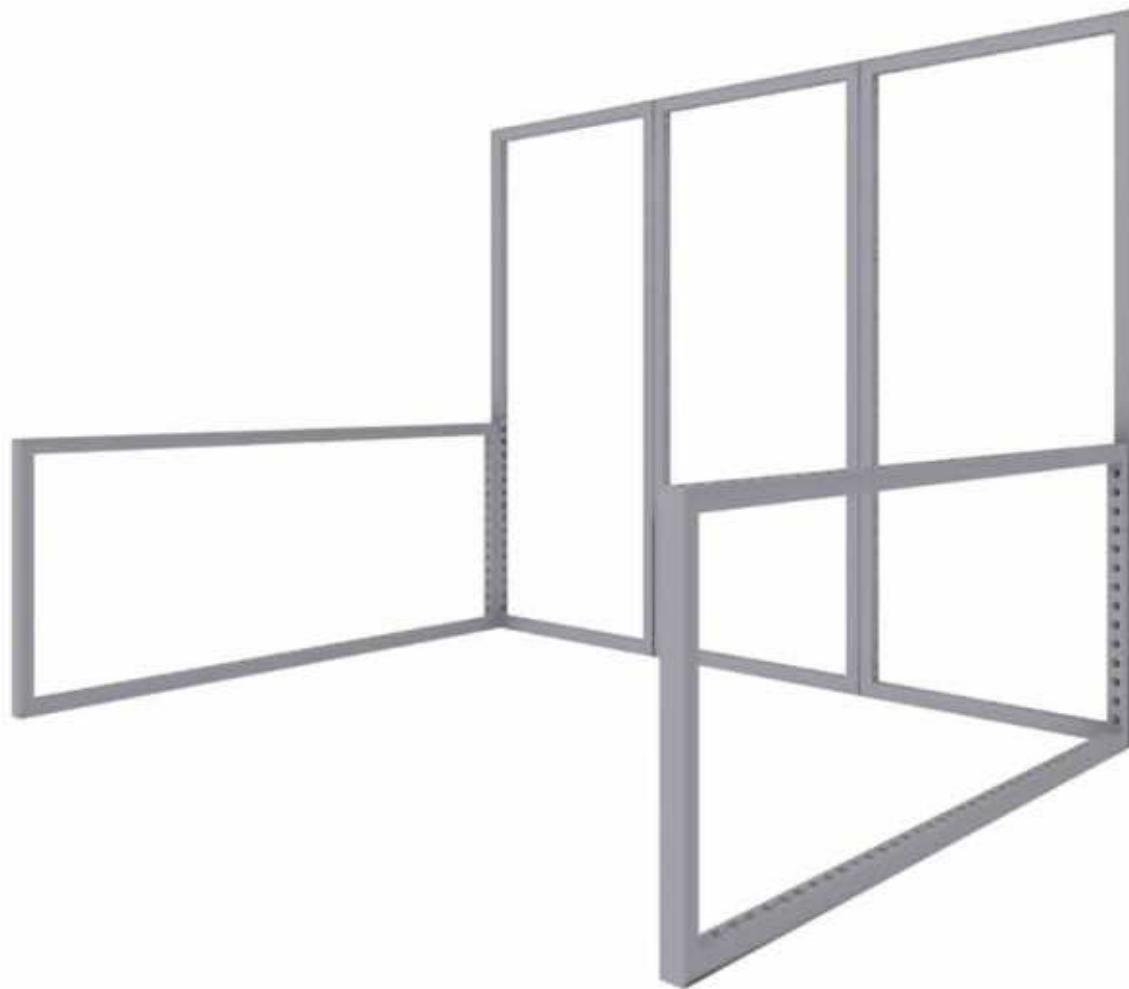
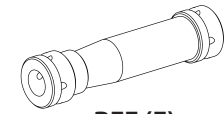
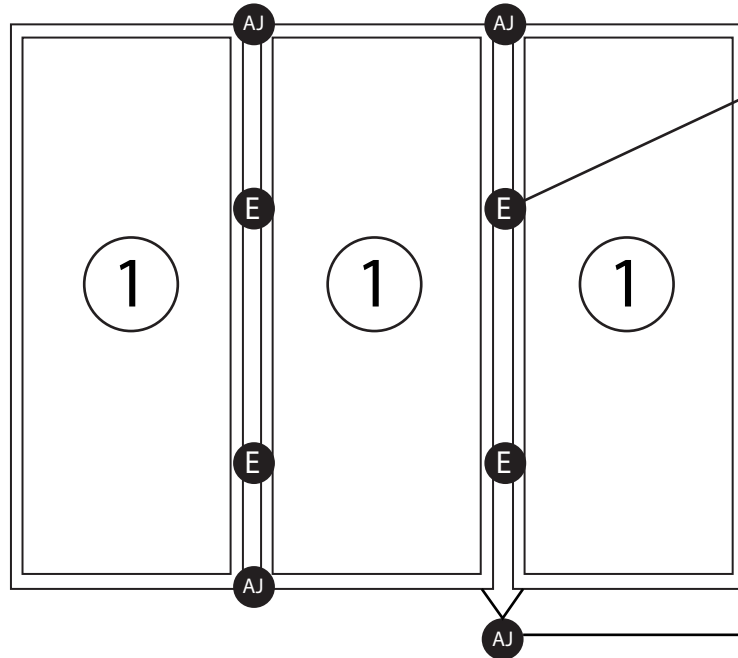


**MODCO 14 - 10X10**

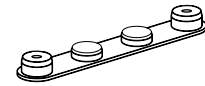
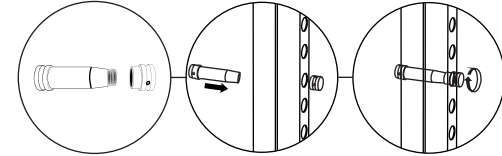


# MODCO 14 - 10X10

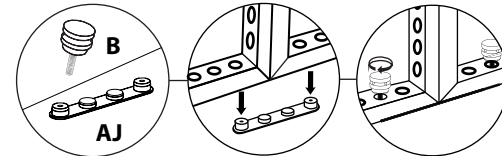
- Use PARTS LIST to reference parts. Repeat twice for two walls.



**REF (E)**  
MOD-CLA-CON



**REF (AJ) / (B)**  
MOD-180D-CON / MOD-PC

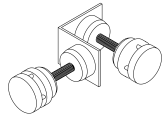


## PARTS LIST (TOWER)

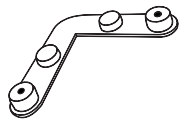
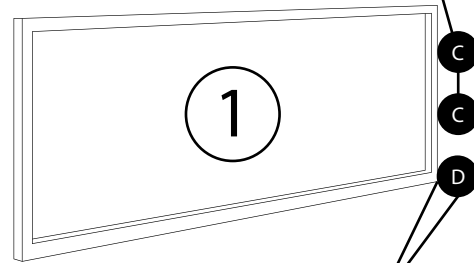
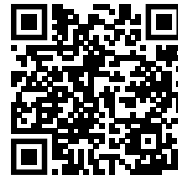
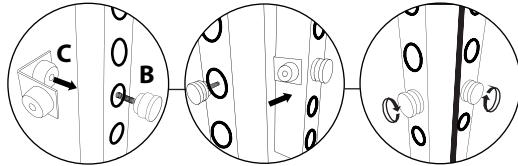
REF	QTY	PART NO.	DESCRIPTION
1	5	MOD-FRM-992x2418	Straight Frame, Corner Screw Connect 992mm x 2418mm
B	20	MOD-PC	Pin Connector
C	4	MOD-90D-CON	90° Connector
D	2	MOD-SM90D-CON	90° Connector
E	4	MOD-CLA-CON	Clamp Connector
AJ	4	MOD-180D-CON	180 Degree Connector

# MODCO 14 - 10X10

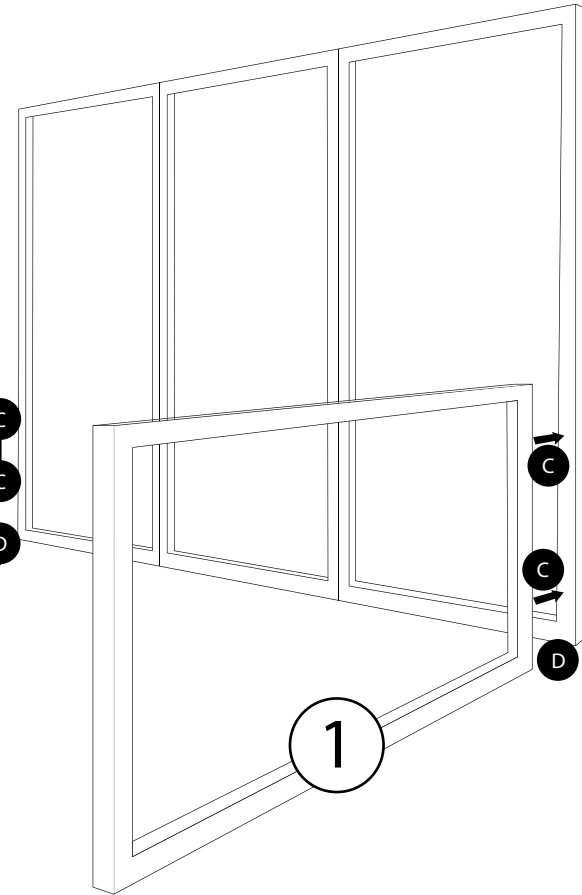
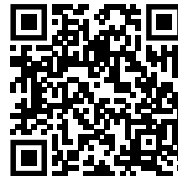
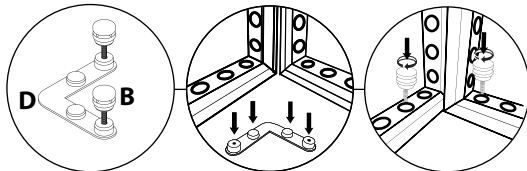
- Connect each horizontal frame to the main backwall.



**REF (C) / (B)**  
MOD-90D-CON + MOD-PC

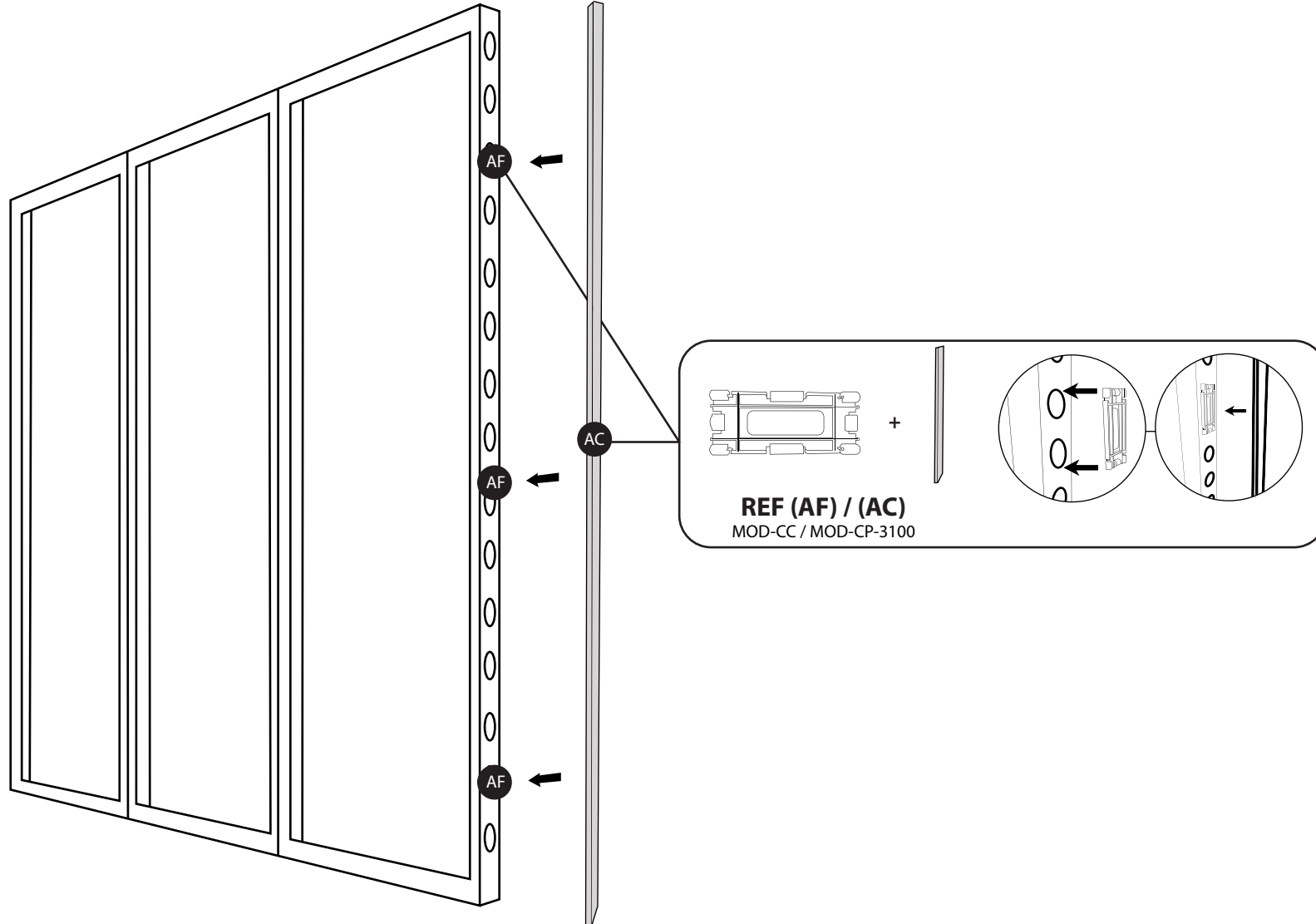


**REF (D) / (B)**  
MOD-SM90D-CON / MOD-PC



# MODCO 14 - 10X10

- Insert clip connector into holes (exposed side). Attach cover profile to each exposed side (3 sides total). Cover profile locks into clip connectors.



**REF (AF) / (AC)**  
MOD-CC / MOD-CP-3100

## COVER PROFILES & ACCESSORIES

REF	QTY	PART NO.	DESCRIPTION
AC	4	MOD-CP-992x2418	Cover Profile for Frame 992x2418. Flat Model. Anodized
AE	2	MOD-CP-3100 (39")	Cover Profile, Bar Per 3100mm Cover Profile. Flat Model. Anodized
AF	16	MOD-CC	Clip Connector Cover Connects Cover Profile

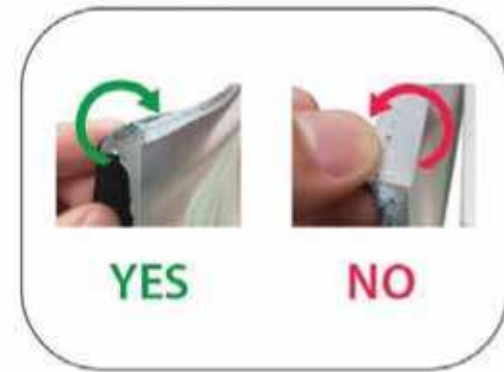
# GRAPHIC INSTALL



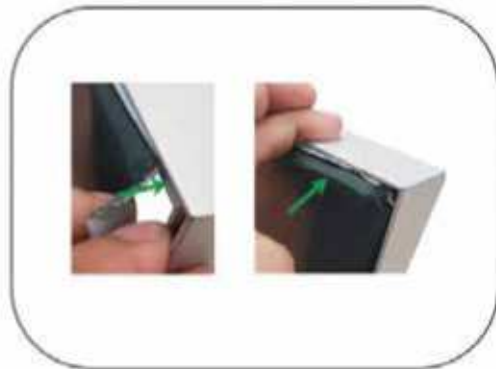
Place graphic over the front of the frame.



Begin inserting SEG beading at each corner.



Insert the silicone beading with the fabric folded over. The silicone beading should not be exposed.



Using your fingers, push both fabric and silicone beading completely into the extrusion channel.



Continue to push in the remaining silicone beading on each side.



Check the perimeter of the frame for any excess beading that hasn't been pushed in. Graphic should be taut.