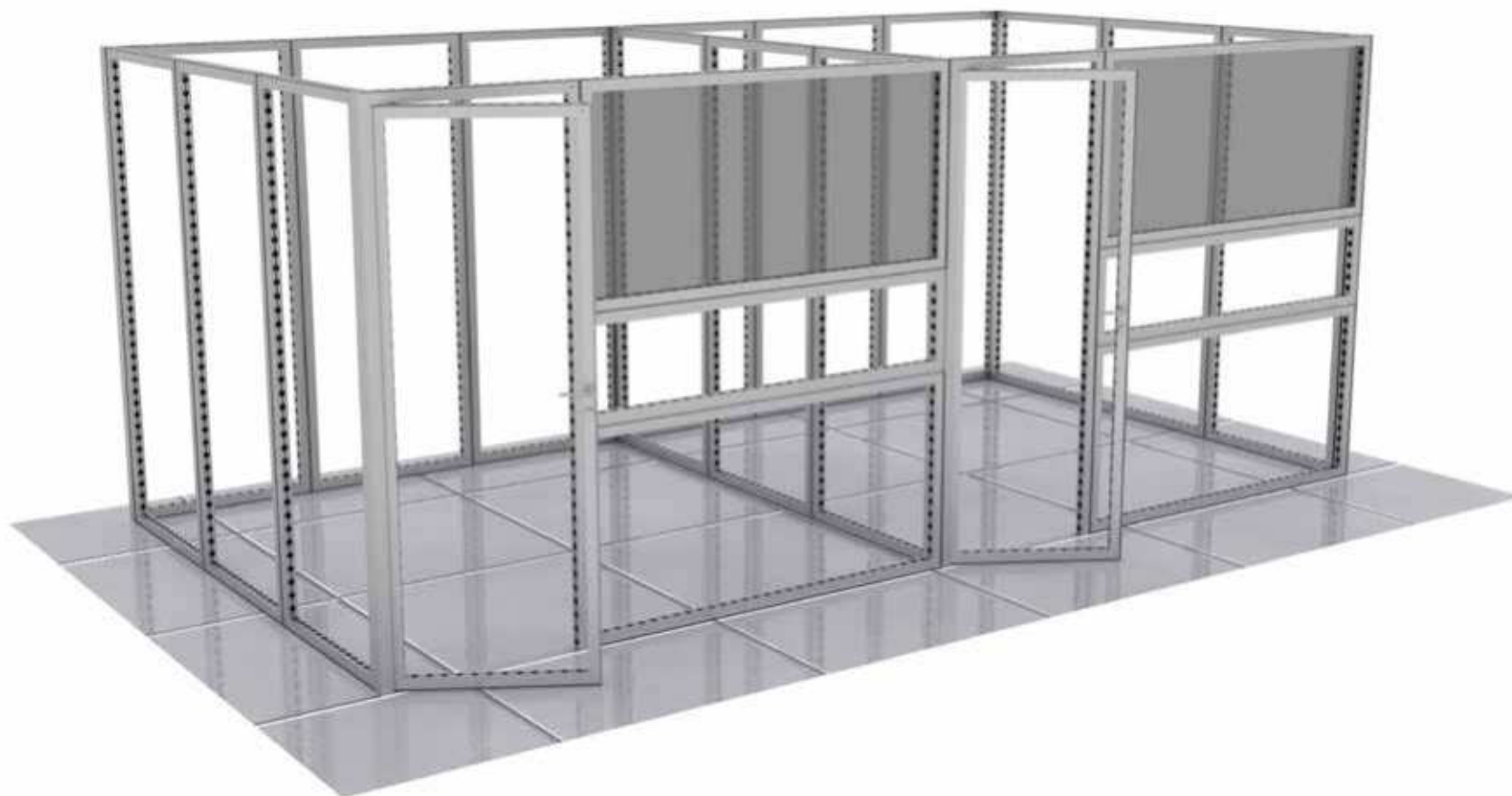
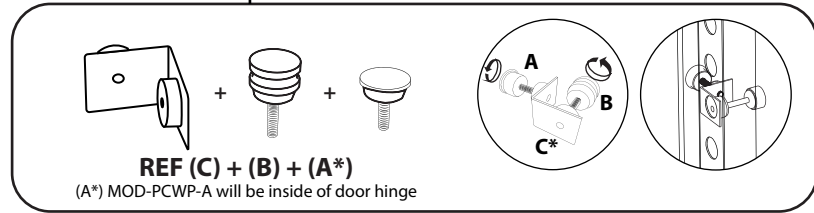
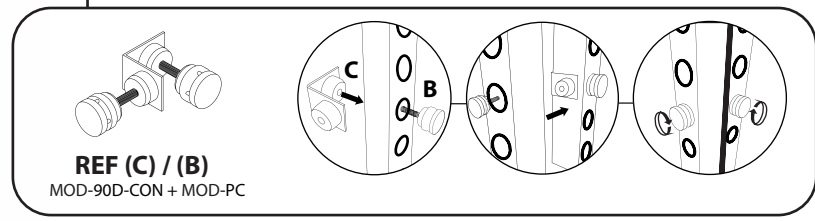
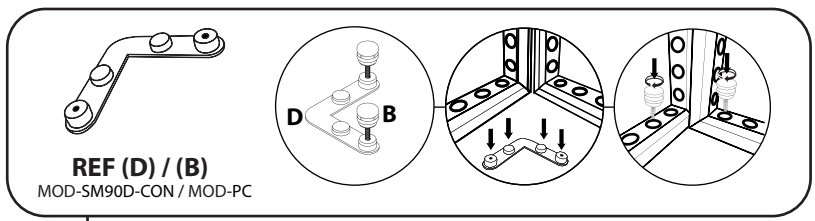
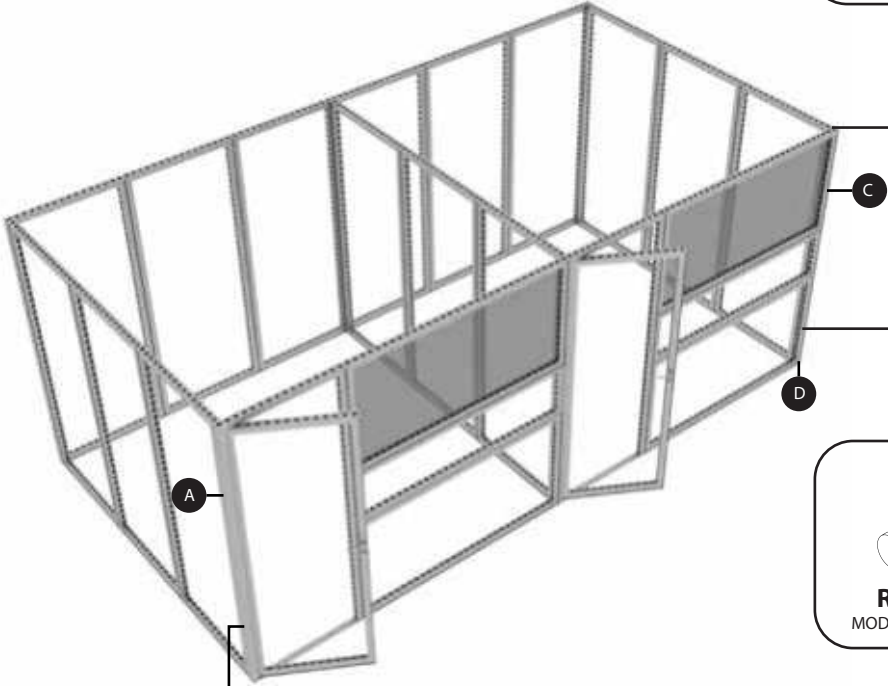


MODCO 17 - 20x10

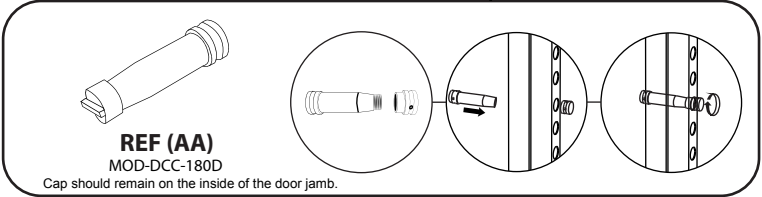
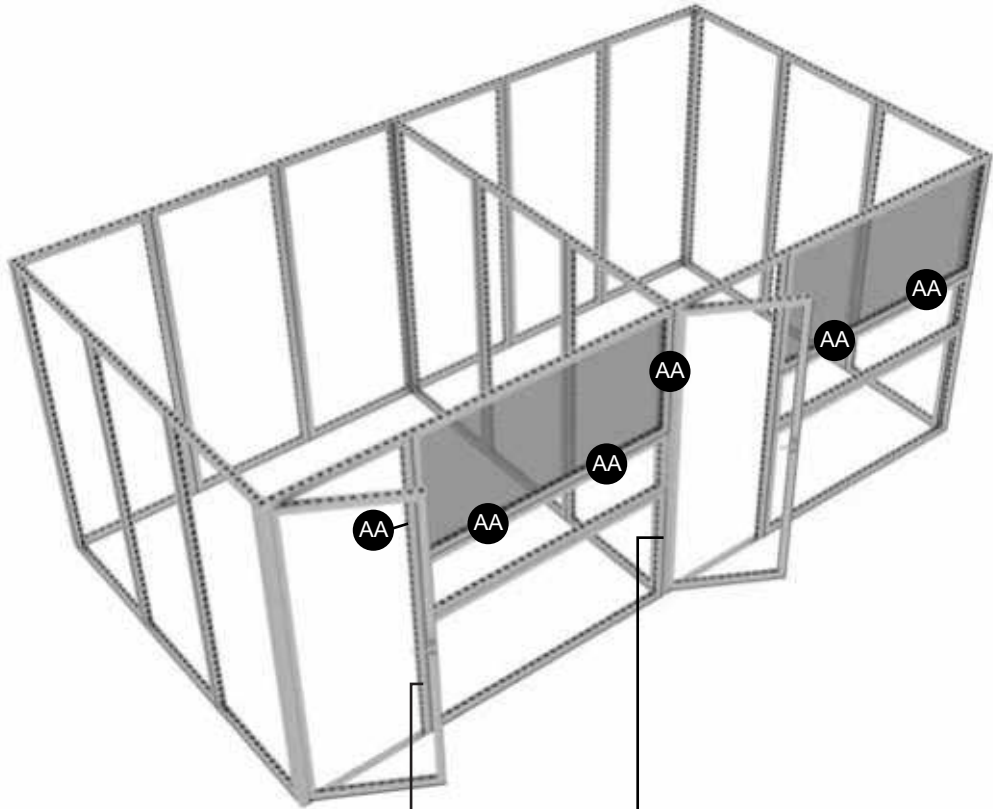


MODCO 17 - 20x10



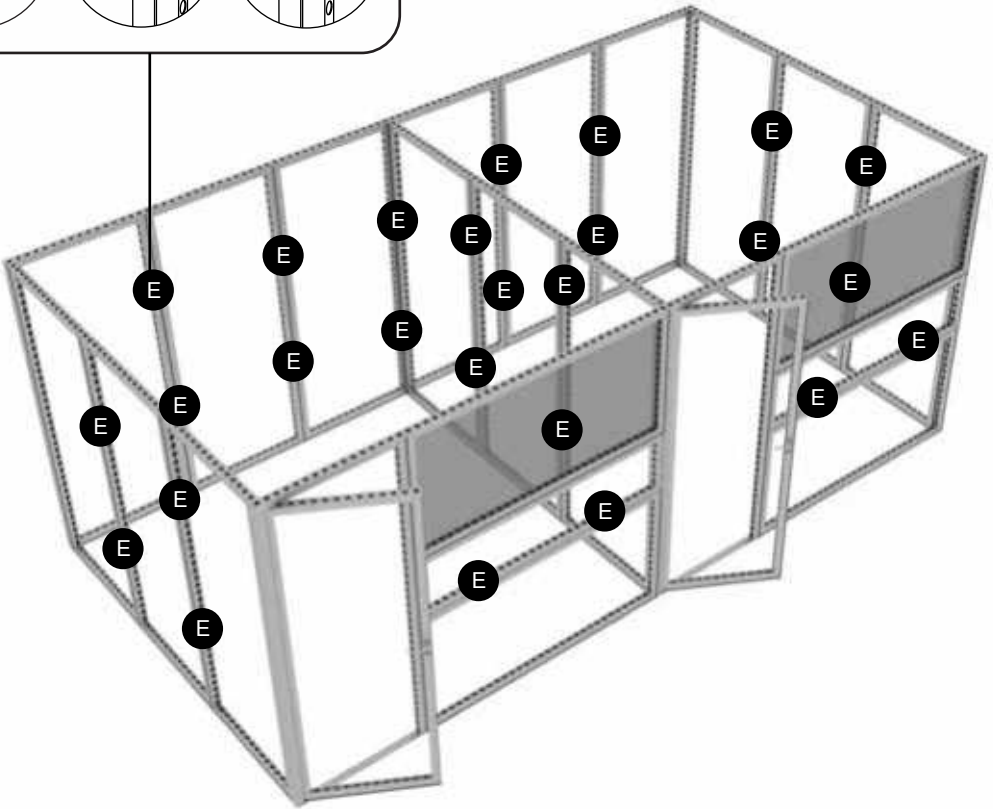
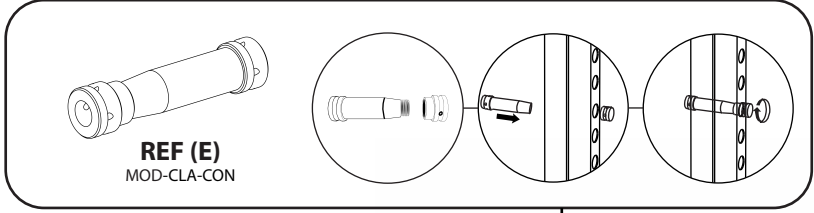
REF	QTY	PART NO.	DESCRIPTION
B	30	MOD-PC	Pin Connector
D	8	MOD-90D-CON	Middle 90° Connector
C	8	MOD-SM90D-CON	Top/Bottom 90° Connector
A	2	MOD-PCWP-A	Pin Connector for Door Jamb

MODCO 17 - 20x10



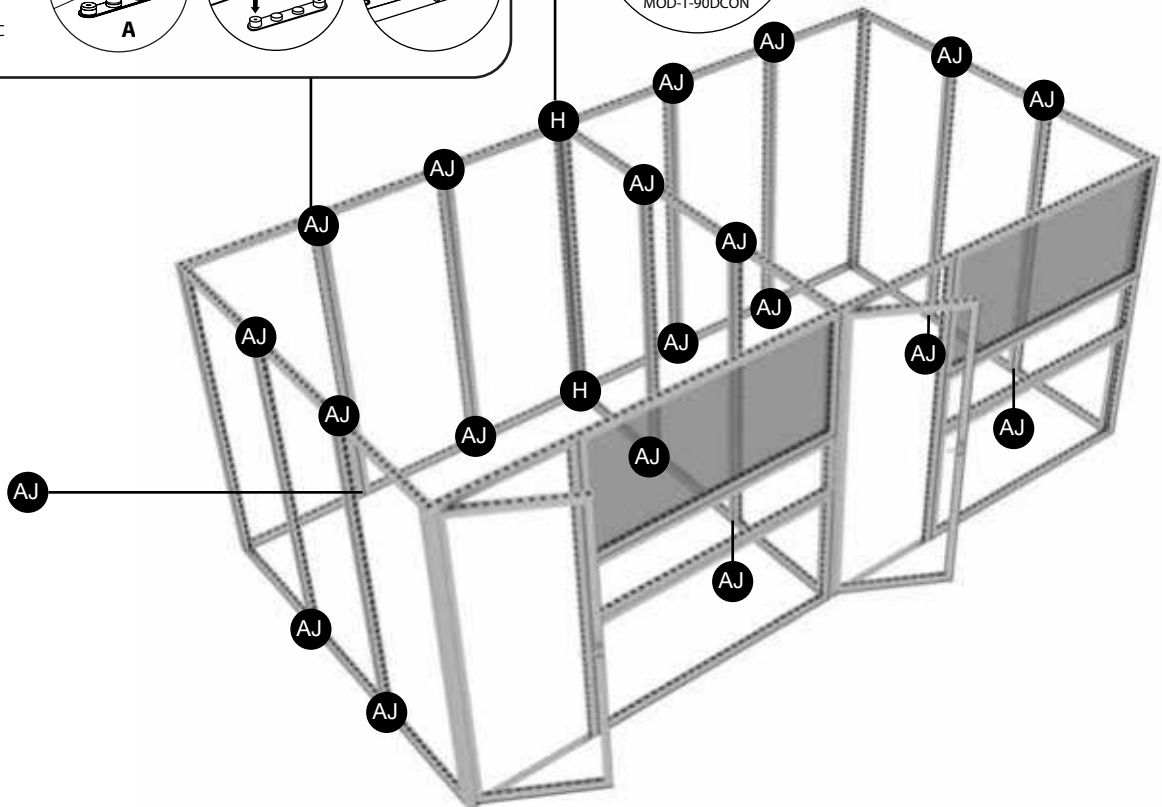
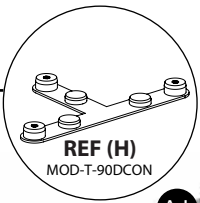
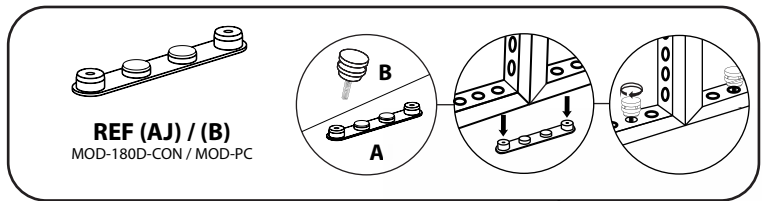
REF	QTY	PART NO.	DESCRIPTION
AA	8	MOD-DCC-180D	Door Clamp Connector, 180 Degrees (Connect to Wall Frame)

MODCO 17 - 20x10



REF	QTY	PART NO.	DESCRIPTION
E	26	MOD-CLA-CON	Clamp Connector

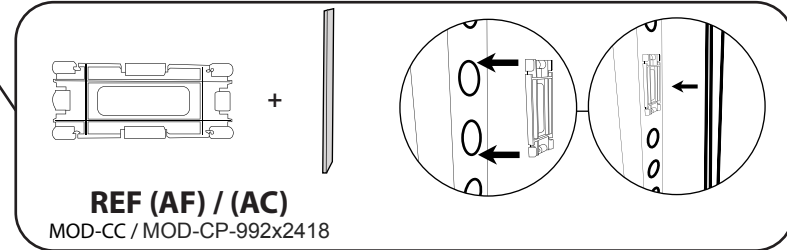
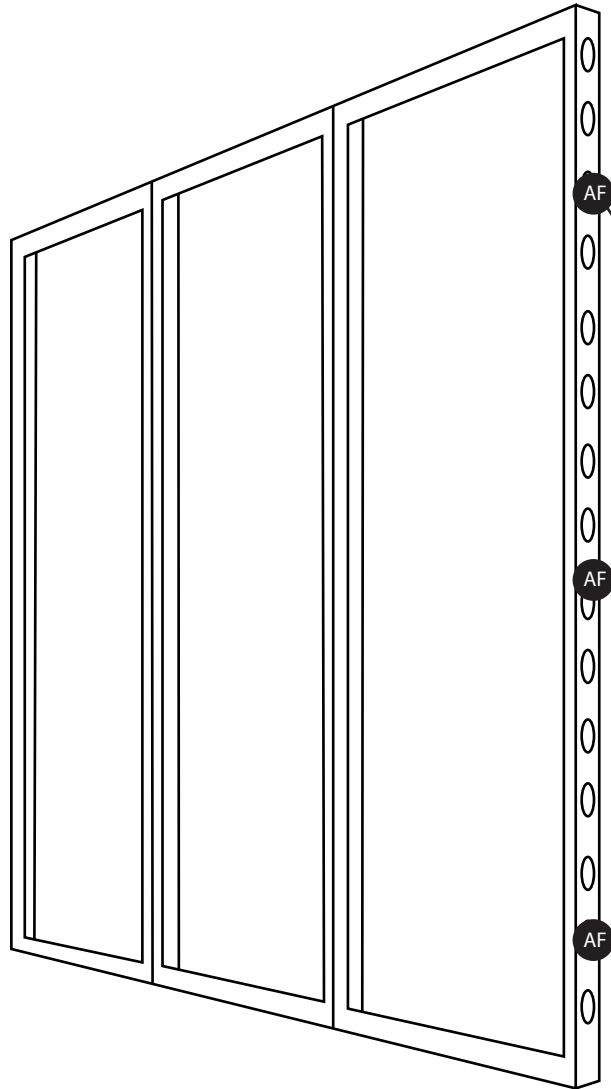
MODCO 17 - 20x10



REF	QTY	PART NO.	DESCRIPTION
AJ	28	MOD-180D-CON	180 Degree Connector
H	2	MOD-T-90DCON	T Shape 3 Way 90 Degree Connector Used per Set of 2pcs

MODCO 17 - 20X10

- Use REF column to reference parts. Attach cover profile to each exposed side (4 sides total).



COVER PROFILES & ACCESSORIES			
REF	QTY	PART NO.	DESCRIPTION
AC	4	MOD-CP-992x2418	Cover Profile for Frame 992x2418. Flat Model. Anodized
AF	12	MOD-CC	Clip Connector Cover Connects Cover Profile
AL	108	MOD-FP	Modco Frame Protector

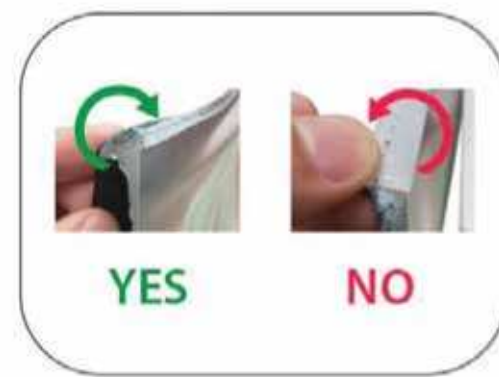
GRAPHIC INSTALL



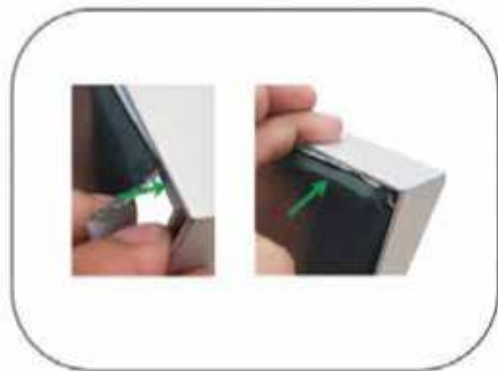
Place graphic over the front of the frame.



Begin inserting SEG beading at each corner.



Insert the silicone beading with the fabric folded over. The silicone beading should not be exposed.



Using your fingers, push both fabric and silicone beading completely into the extrusions channel.



Continue to push in the remaining silicone beading on each side.



Check the perimeter of the frame for any excess beading that hasn't been pushed in. Graphic should be taut.