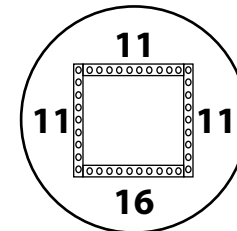
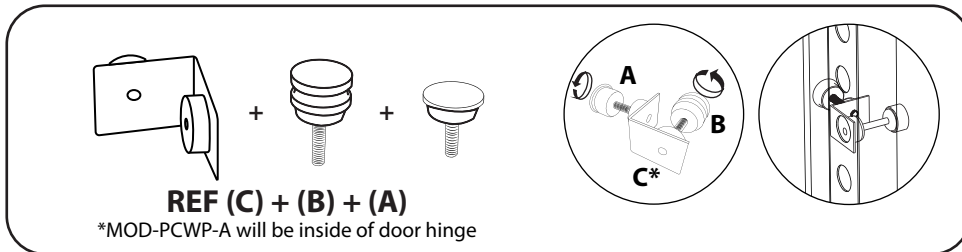
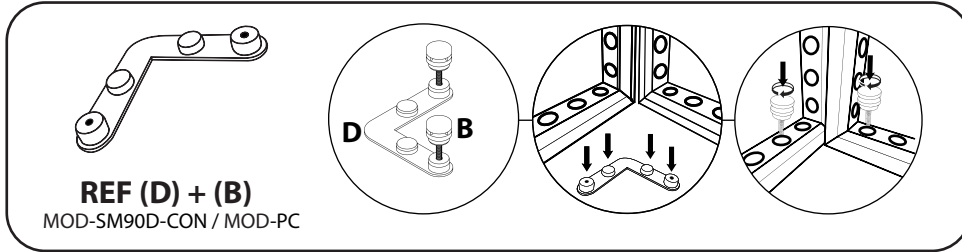
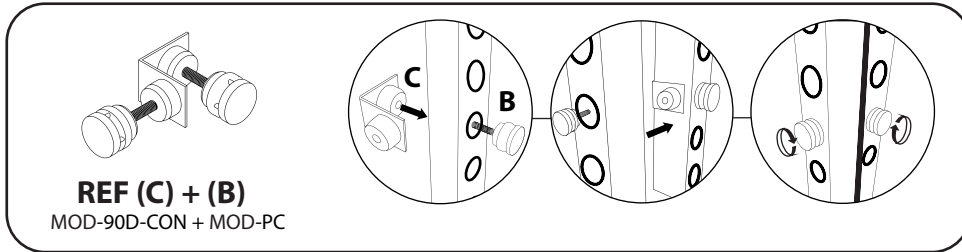


MODCO 7 - TOWER

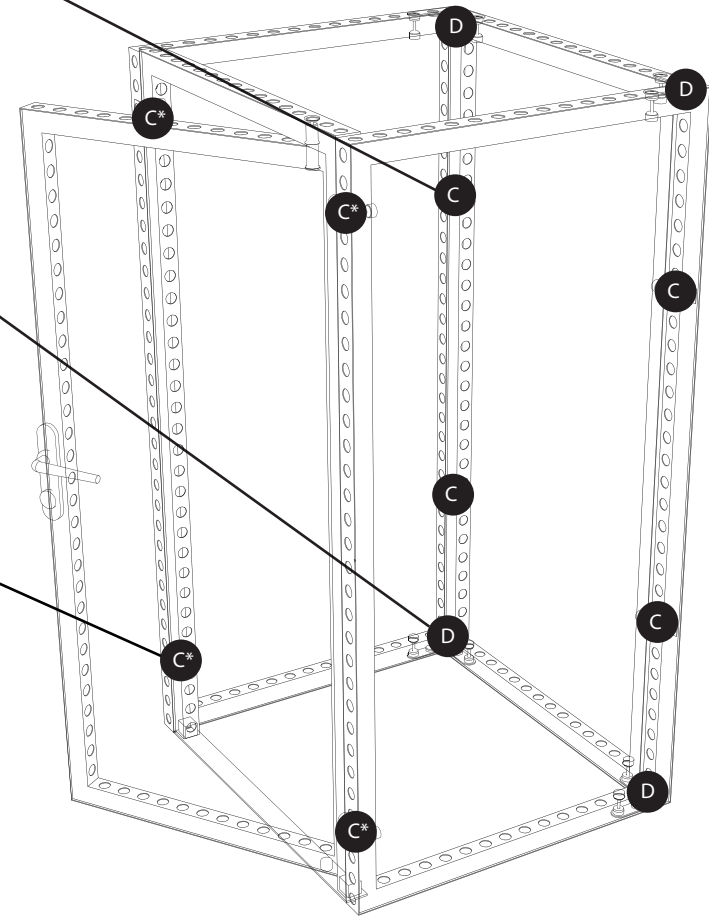


MODCO 7 - TOWER

- Use REF column to reference parts. Reference "Birds eye view" for footprint orientation.



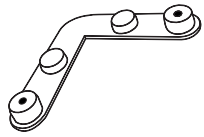
Birds eye view



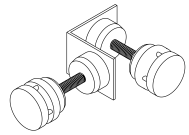
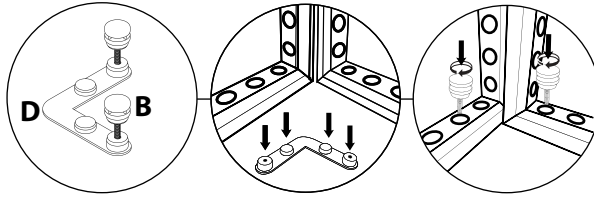
PARTS LIST (TOWER)			
REF	QTY	PART NO.	DESCRIPTION
11	7	MOD-FRM-992x2480	Straight Frame, Corner Screw Connect 992mm x 2480mm
16	1	MOD-DSWL-992x2480	Door Set w/ Lock 992mm x 2480mm
E	6	MOD-CLA-CON	Clamp Connector
D	6	MOD-SM90D-CON	Small 90° Connector
C	16	MOD-90D-CON	90° Connector
B	40	MOD-PC	Pin Connector
A	4	MOD-PCWP-A	Pin Connector for Door Jamb
AA	2	MOD-DCC-180D	Door Clamp Connector, 180 Degrees (Connect to Wall Frame)

MODCO 7 - TOWER

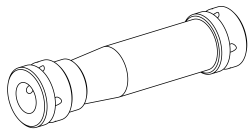
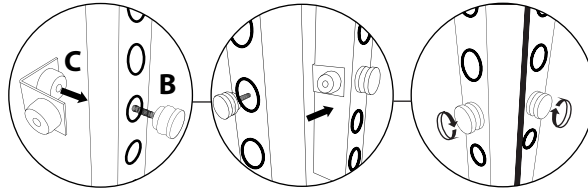
- Use REF column to reference parts. Scissor lift necessary to attach frames on top.



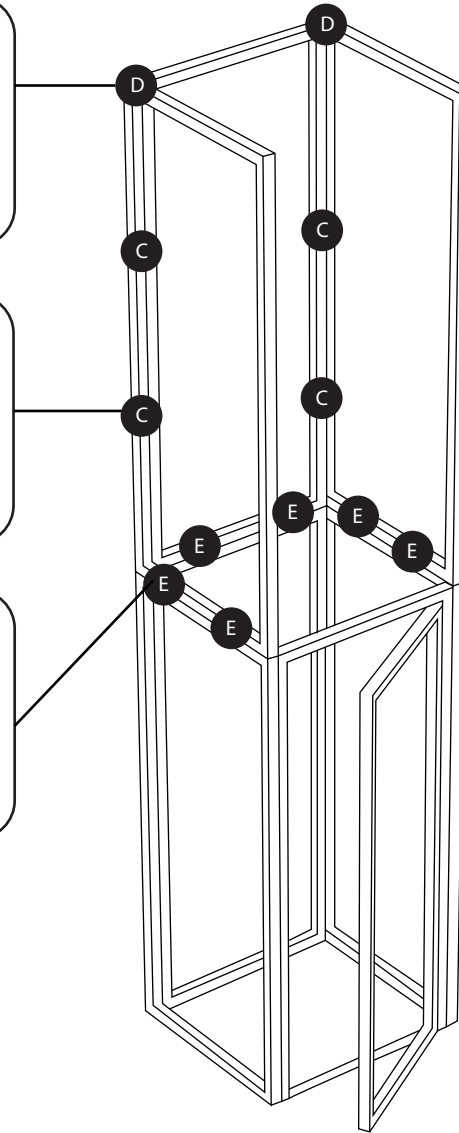
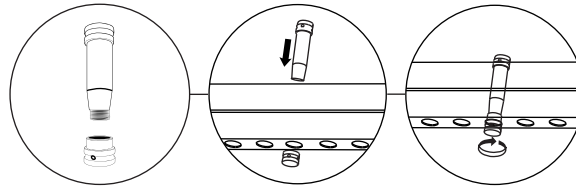
REF (D) + (B)
MOD-SM90D-CON / MOD-PC



REF (C) + (B)
MOD-90D-CON + MOD-PC

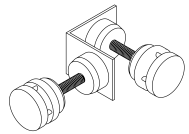


REF (E)
MOD-CLA-CON

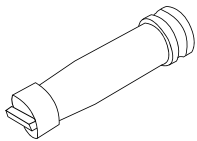
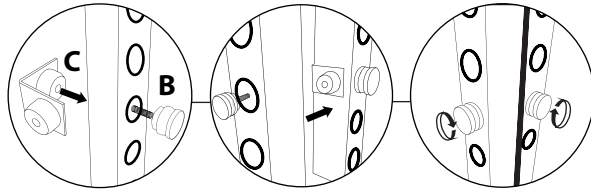


MODCO 7 - TOWER

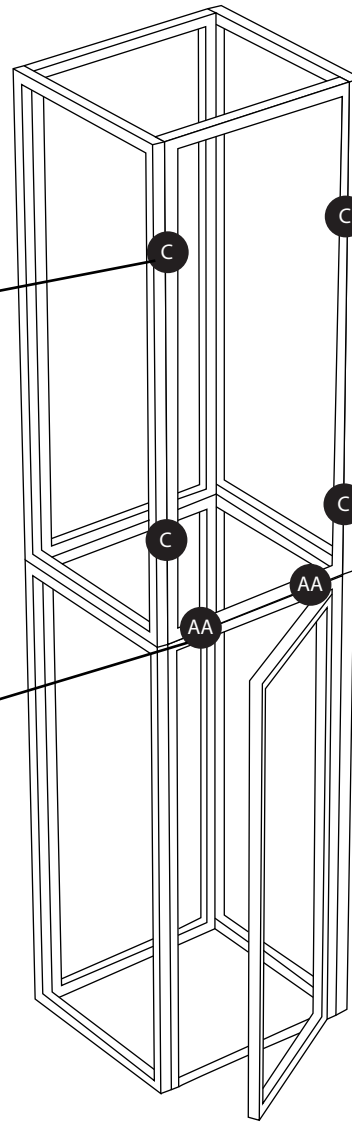
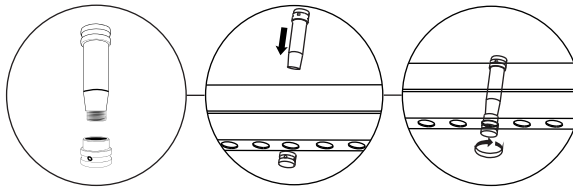
- Use REF column to reference parts. Attach final frame above the door.



REF (C) + (B)
MOD-90D-CON + MOD-PC

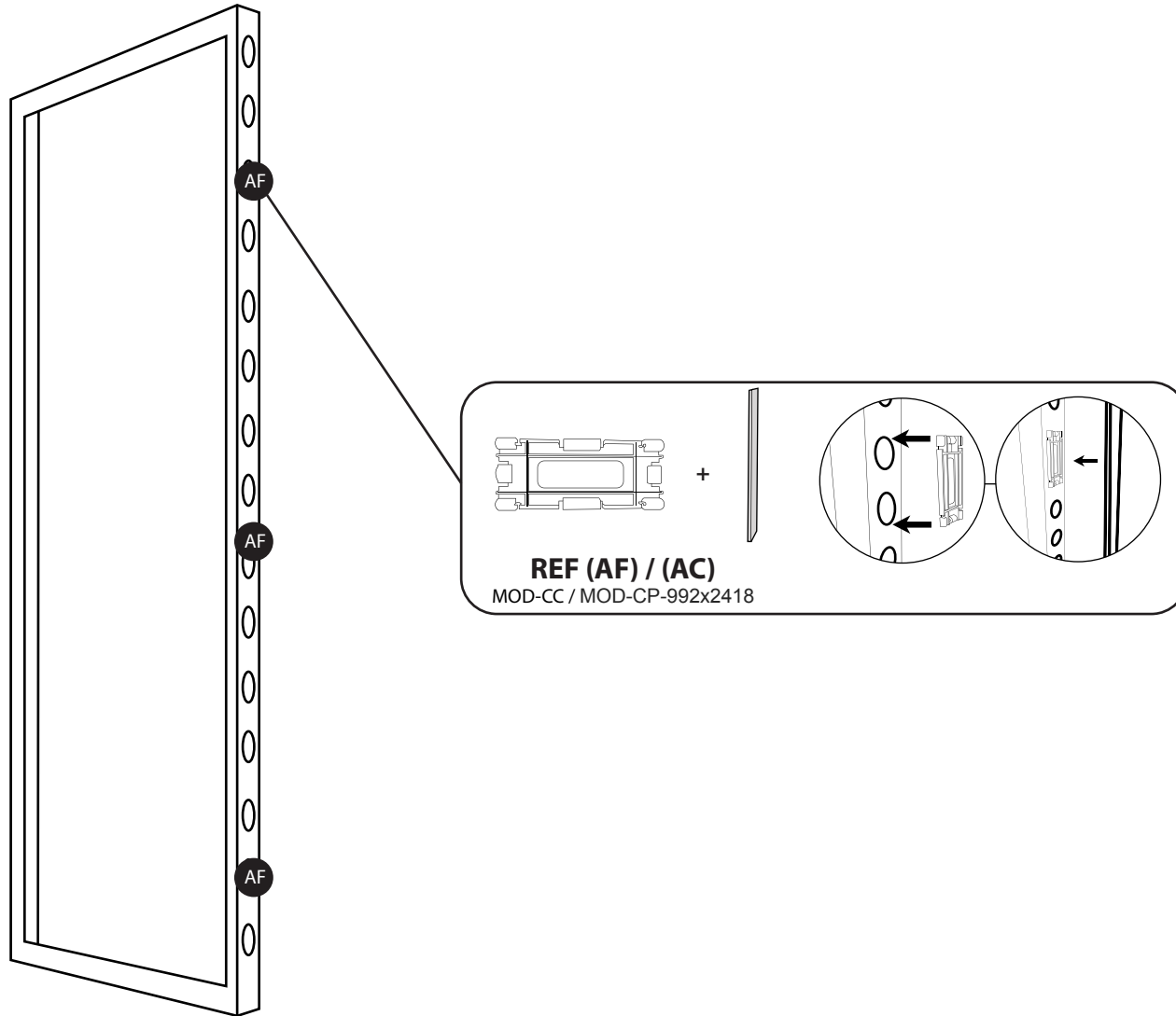


REF (AA)
MOD-DCC-180D



MODCO 7 - TOWER

- Use REF column to reference parts. Attach cover profile to each exposed side (8 sides total).



COVER PROFILES & ACCESSORIES

REF	QTY	PART NO.	DESCRIPTION
AD	8	MOD-CP-992x2480	Cover Profile for Frame 992x2480. Flat Model. Anodized
AF	24	MOD-CC	Clip Connector Cover Connects Cover Profile

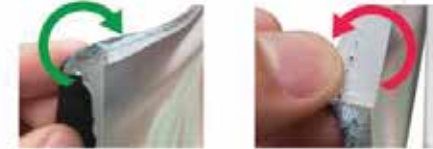
GRAPHIC INSTALL



Place graphic over the front of the frame.



Begin inserting SEG beading at each corner.



YES

NO

Insert the silicone beading with the fabric folded over. The silicone beading should not be exposed.



Using your fingers, push both fabric and silicone beading completely into the extrusions channel.



Continue to push in the remaining silicone beading on each side.



Check the perimeter of the frame for any excess beading that hasn't been pushed in. Graphic should be taut.