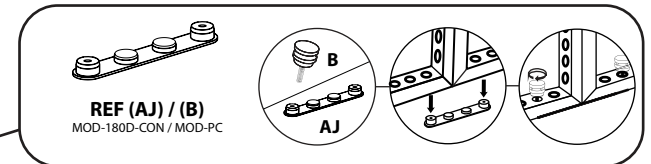
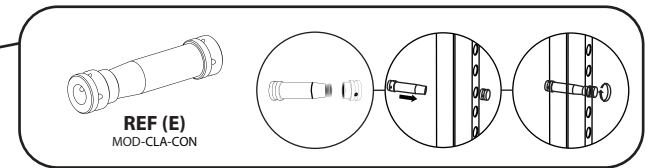
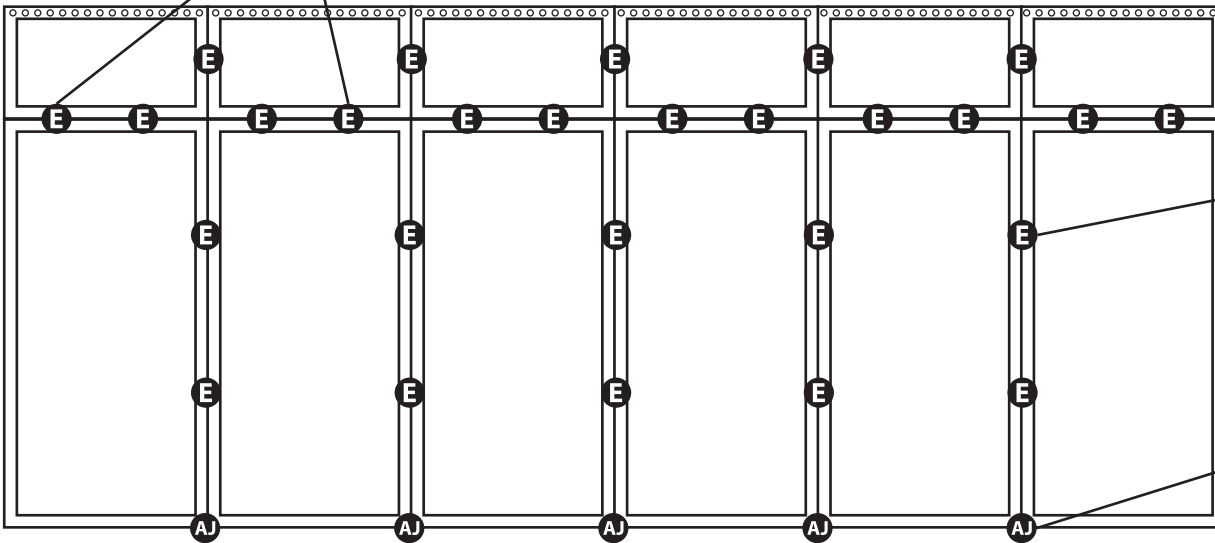
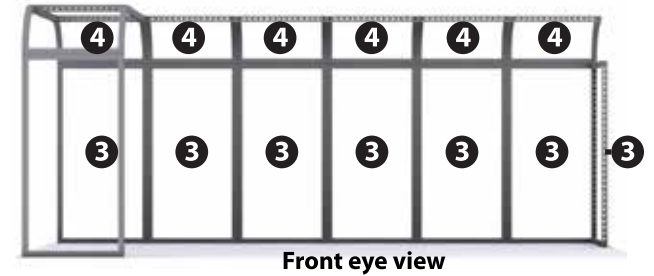
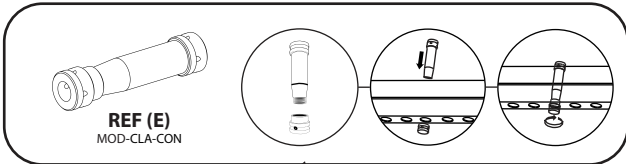


MODCO 9 - 20 x 10



MODCO 9 - 20 x 10

- Use REF column to reference parts. Reference "Front eye view" for footprint orientation.
Part 1 of 2

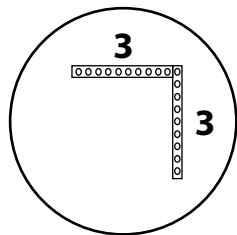


PARTS LIST (BACKWALL)

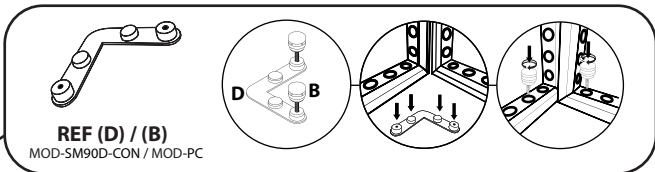
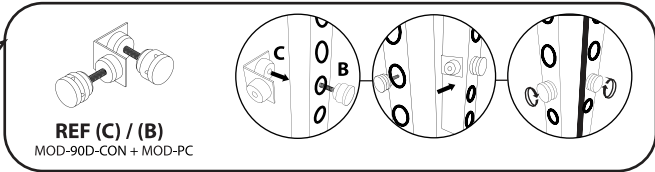
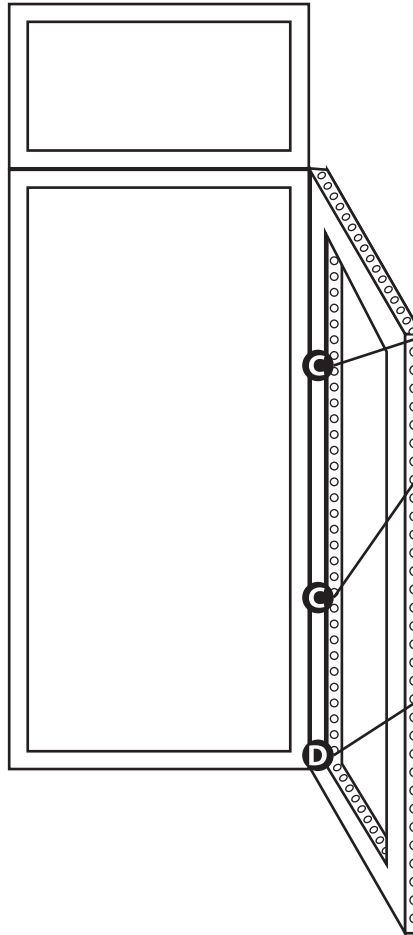
REF	QTY	PART NO.	DESCRIPTION
3	7	MOD-FRM-992x1984	Straight Frame, Corner Screw Connect 992mm x 1984mm
4	6	MOD-CRVFRM-774x992	1/4 Curved Frame, Welded 774mm x 992mm
AJ	5	MOD-180D-CON	180 Degree Connector
E	27	MOD-CLA-CON	Clamp Connector
C	2	MOD-90D-CON	90° Connector
D	1	MOD-SM90D-CON	90° Connector
B	16	MOD-PC	Pin Connector

MODCO 9 - 20 x 10

- Use REF column to reference parts. Reference "Birds eye view" for footprint orientation.
Part 2 of 2



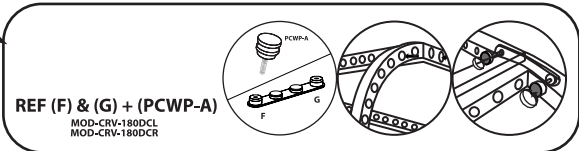
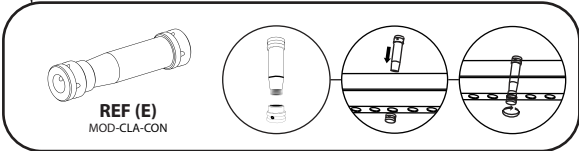
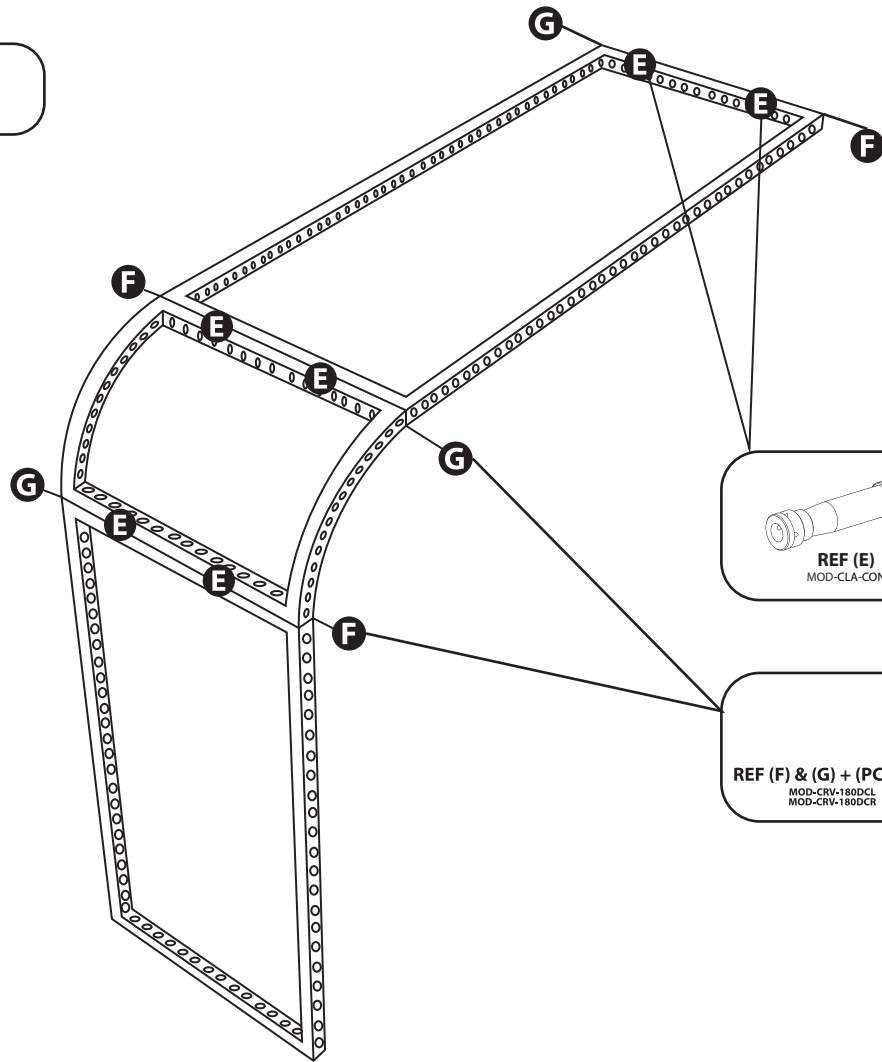
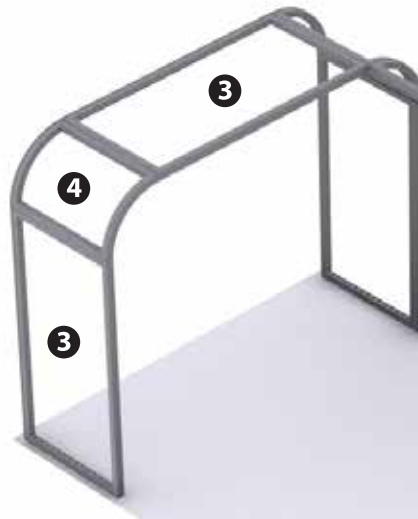
Birds eye view



PARTS LIST (BACKWALL)

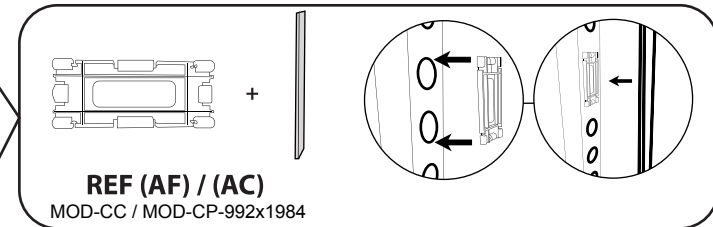
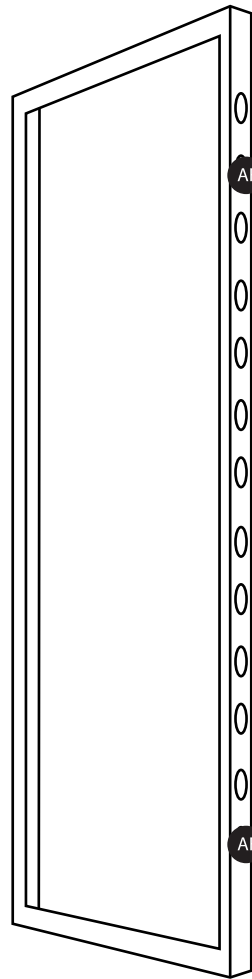
REF	QTY	PART NO.	DESCRIPTION
3	7	MOD-FRM-992x1984	Straight Frame, Corner Screw Connect 992mm x 1984mm
4	6	MOD-CRVFRM-774x992	1/4 Curved Frame, Welded 774mm x 992mm
AJ	5	MOD-180D-CON	180 Degree Connector
E	27	MOD-CLA-CON	Clamp Connector
C	2	MOD-90D-CON	90° Connector
D	1	MOD-SM90D-CON	90° Connector
B	16	MOD-PC	Pin Connector

MODCO 9 - 20 x 10



PARTS LIST (ARCH)			
REF	QTY	PART NO.	DESCRIPTION
3	2	MOD-FRM-992x1984	Straight Frame, Corner Screw Connect 992mm x 1984mm
4	1	MOD-CRVFRM-774x992	1/4 Curved Frame, Welded 774mm x 992mm
E	6	MOD-CLA-CON	Clamp Connector
F	3	MOD-CRV-180DCL	Curve 180 Degree Connector (Left)
G	3	MOD-CRV-180DCR	Curve 180 Degree Connector (Right)
B	12	MOD-PC	Pin Connector

MODCO 9 - 20 x 10



COVER PROFILES & ACCESSORIES

REF	QTY	PART NO.	DESCRIPTION
AE	4.8	MOD-CP-3100	Cover Profile, Bar Per 3100mm Cover Profile. Flat Model. Anodized
AF	20	MOD-CC	Clip Connector Cover Connects Cover Profile
AL	64	MOD-FP	Modco Frame Protector
	1	MX-CRATE-F	Wooden Crate of L 104",W 44",H 54" made in Mexico
AG	4	MOD-CP-774	Curved Cover profile 774mm(R1/4)
AH	8	MOD-PCWP-B	Pin connector(use with profile cover)
AI	8	MOD-SN-28MM	28mm screw nut

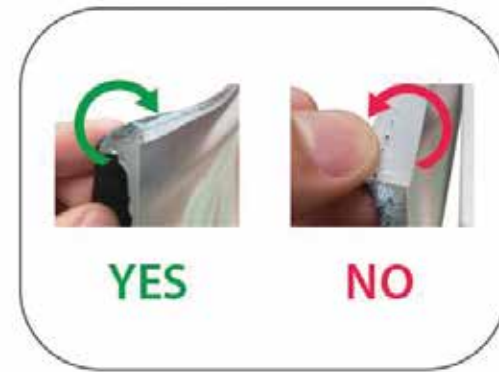
GRAPHIC INSTALL



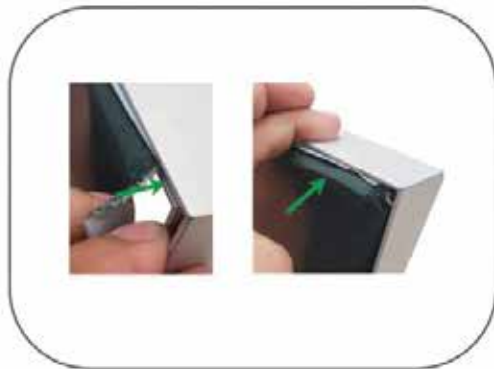
Place graphic over the front of the frame.



Begin inserting SEG beading at each corner.



Insert the silicone beading with the fabric folded over. The silicone beading should not be exposed.



Using your fingers, push both fabric and silicone beading completely into the extrusions channel.



Continue to push in the remaining silicone beading on each side.



Check the perimeter of the frame for any excess beading that hasn't been pushed in. Graphic should be taut.